



 **VersaReel[®] Blue**
by Conductix-Wampfler

 **Bluetooth[®]**

 **CONDUCTIX**
wampfler

VersaReel® Blue

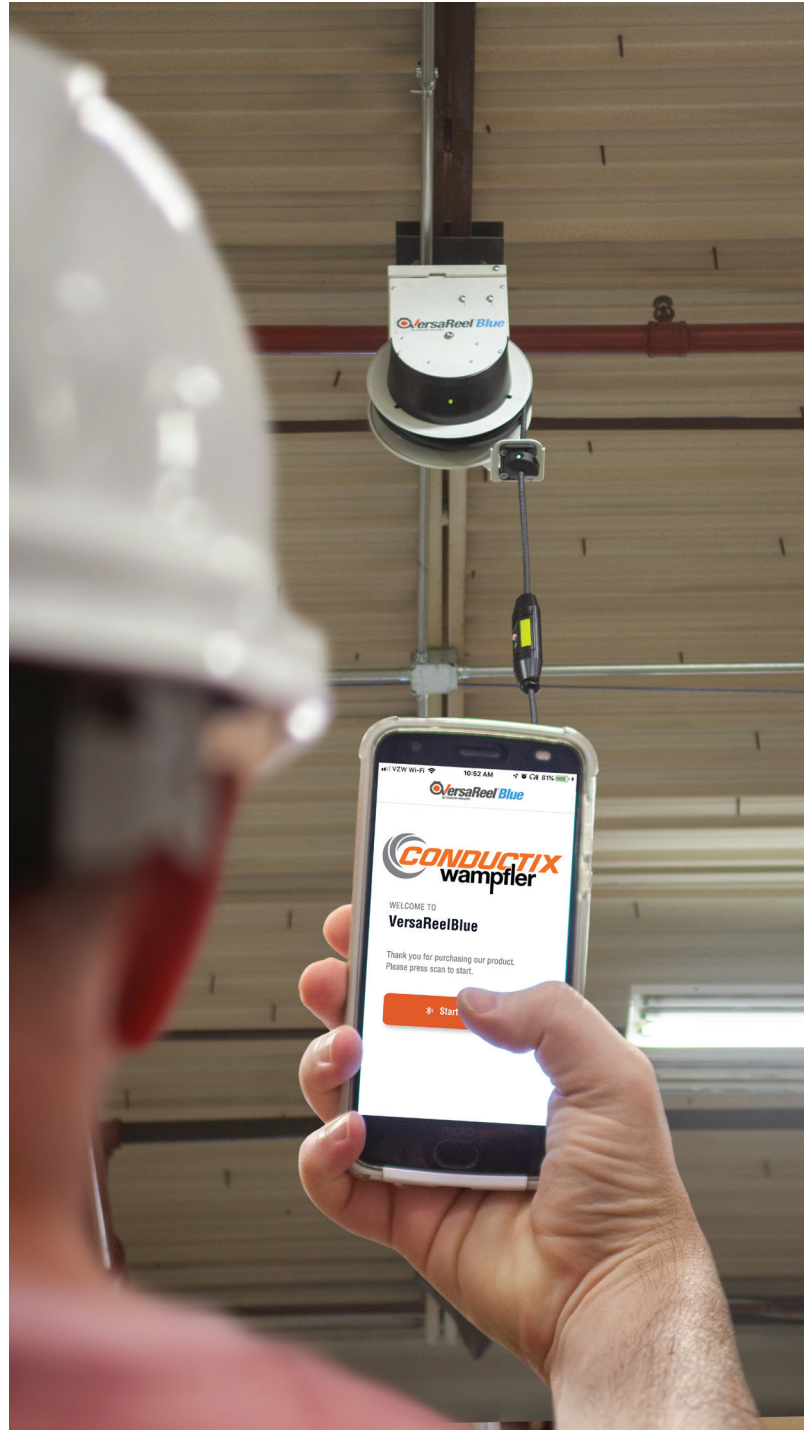
VersaReel® Blue is an innovative and safer way to manage drop-cables. You can payout and retract the cable without ever having to leave the ground. No ladders or aerial lifts required.

Traditional spring-driven cable reels mounted on ceilings, or high on walls, require a lift or ladder to retrieve the cable end and extend/retract the cable fully back into the reel.

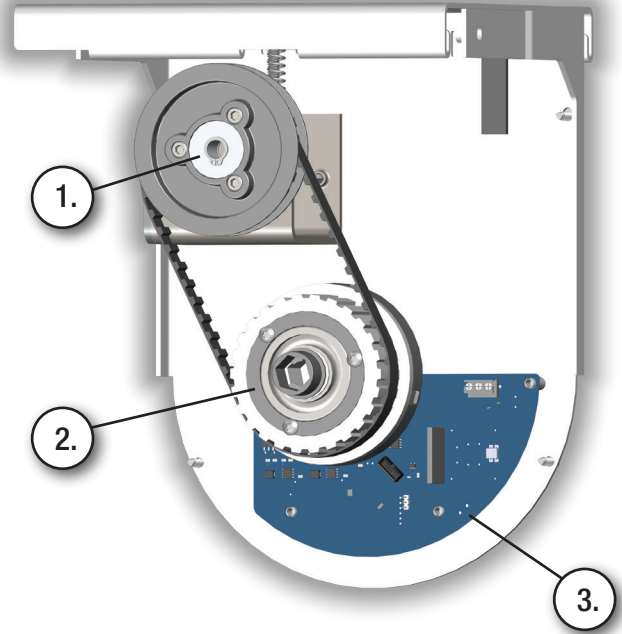
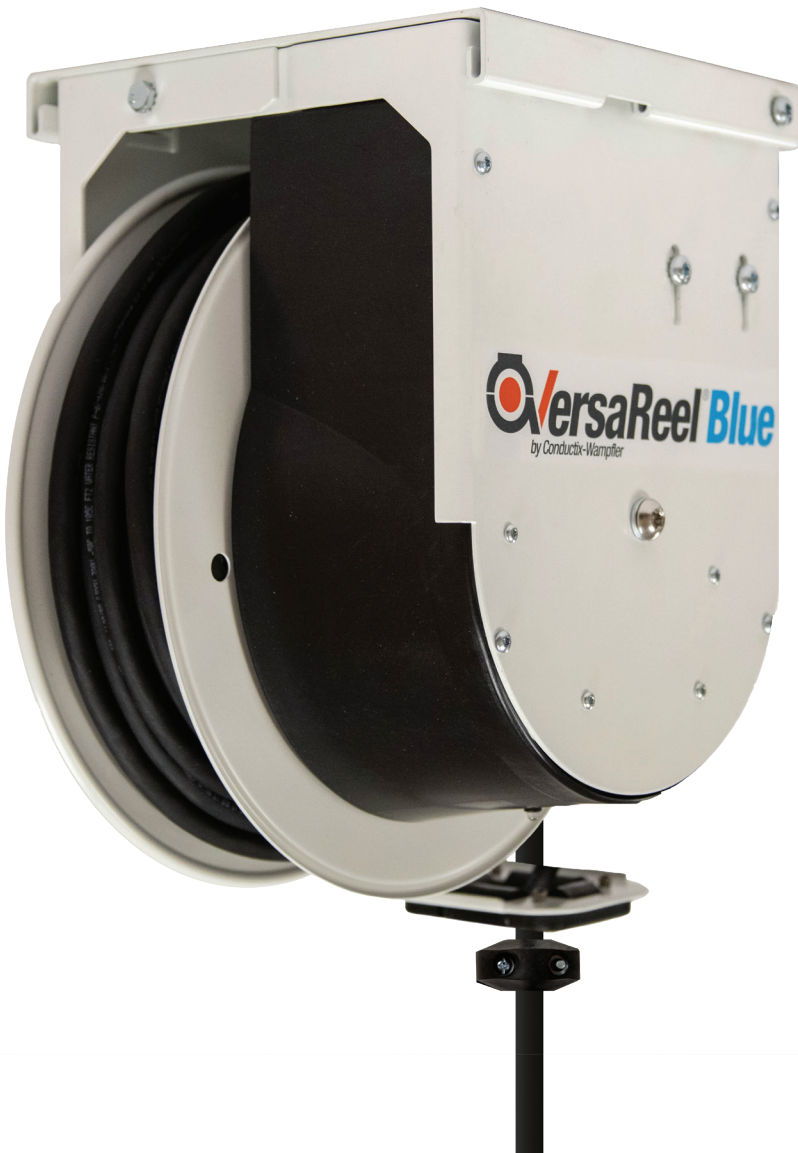
The VersaReel® Blue features an electric motor controlled by Bluetooth® technology to eliminate the need to manually retrieve the cable. The remote control increases safety and decreases the time it takes to manage the cable. Once you download the app, you can operate the reel wirelessly from a distance of up to 100 ft. Up to 10 different VersaReel Blue reels can be operated from a single app, with one reel operated at a time.

The VersaReel® Blue quick-mount base eliminates the need for the installer to support the weight of the reel while attempting to secure in place.

The VersaReel® Blue is proudly made in the USA.



The VersaReel® Blue Difference



1. DC Motor

- Integrated worm drive for worry free operation.
- Powerful enough to payout and retract a full 50 ft of cable with any end accessory up to 2 lbs.

2. Clutch

- Built-in slip differential allows you to pull out cable manually without damaging the reel.
- Clutch will disengage if reel is still connected to machinery or gets caught during retraction.

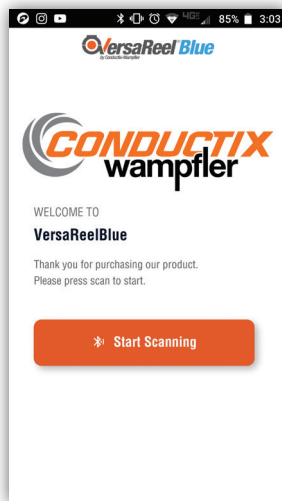
3. Circuit Board

- Integrated Bluetooth® Technology
- Powerful antenna will receive signals up to 100 ft away.
- On board safety protocols lockout the reel if another user is already connected.

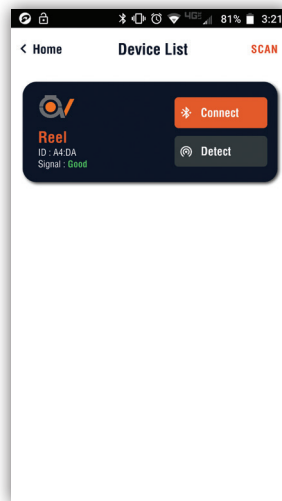
VersaReel Blue App

The VersaReel Blue app is easy to install and simple to use. It works with Bluetooth-enabled smart phones and tablets. All you need to do is download and install the VersaReel Blue app from either the Apple App Store or Google Play Store. Search for "versareelblue" to find the app.

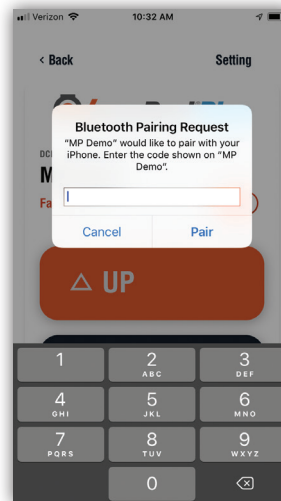
1. Open the app and press the Start Scanning button to search for available reels.



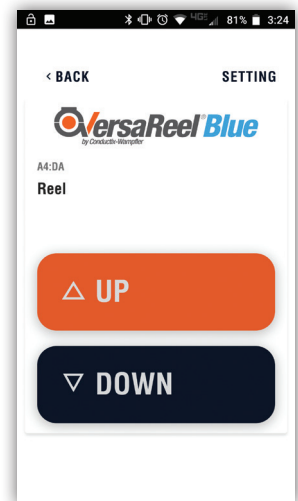
2. Select the reel you wish to connect to and press the connect button.



3. Once connected, press either the UP or Down button. This will prompt you for the pin code for the reel.

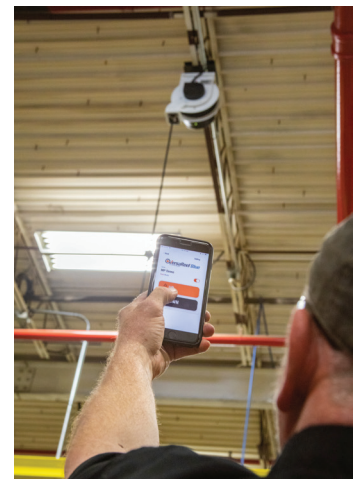


4. Once the pin code is entered you are now ready to use the reel.



App Features

- One app will operate up to 10 reels. Select the reel you want to use from your list of available reels (operates 1 reel at a time).
- When you are done, simply hit the back button or lock screen to disconnect from the reel.
- When a given reel is already being accessed by another user, it is not available for connection to any other user.
- Advanced features allow you to change the Master Password, change individual reel pin codes, or change reel names.



Features and Benefits

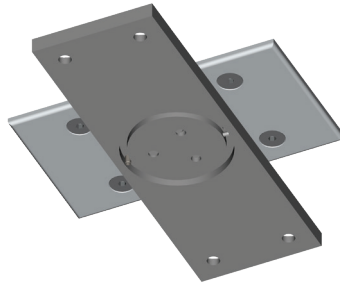
Full Line of End Accessories



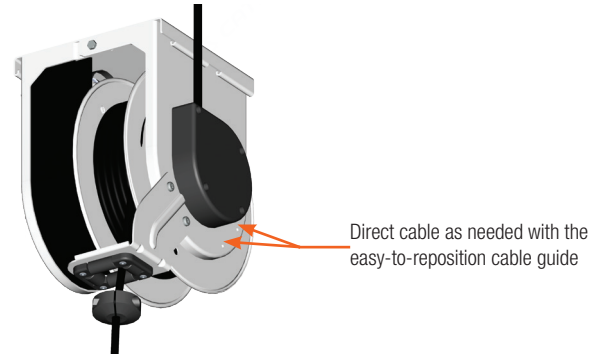
Quick Mount Base Plate



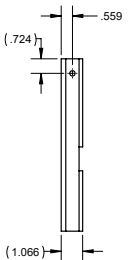
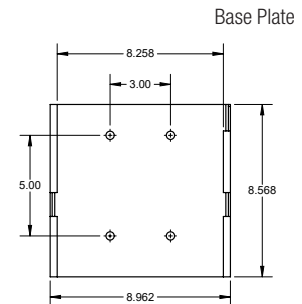
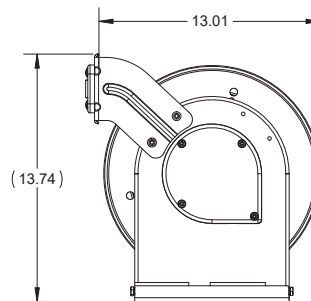
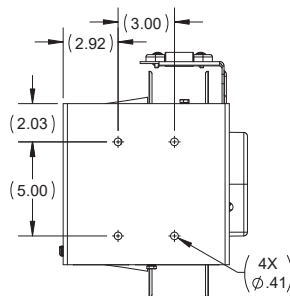
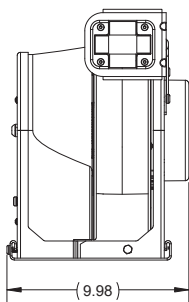
Pivot Base



Quick Change Cable Guide



Technical Specifications and Dimensions



www.conductix.us

Conductix-Wampfler

has just one critical mission:

To provide you with energy and
data transmission systems that
will keep your operations up and
running 24/7/365.

To contact your nearest sales
office, please refer to:

www.conductix.us

